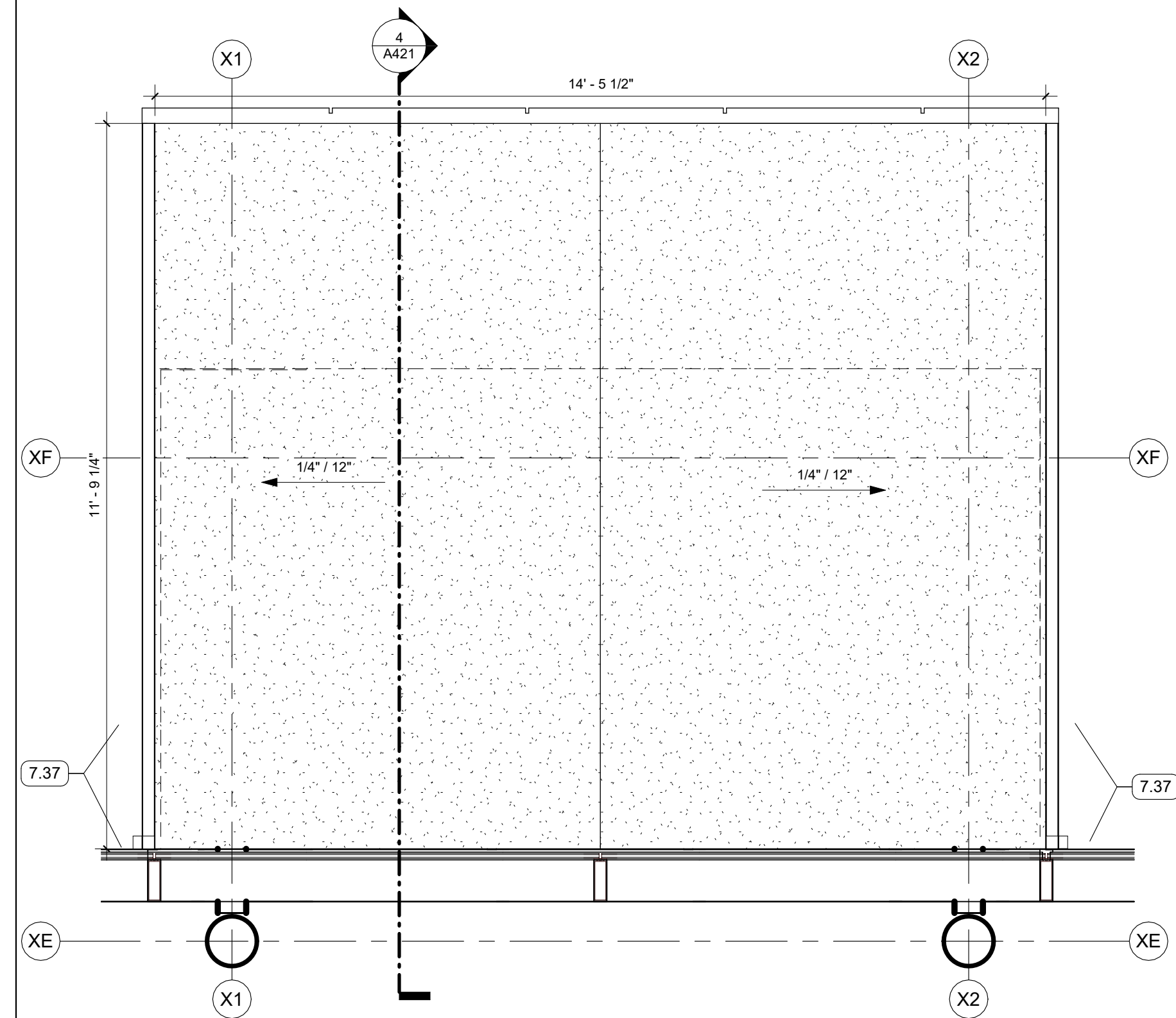
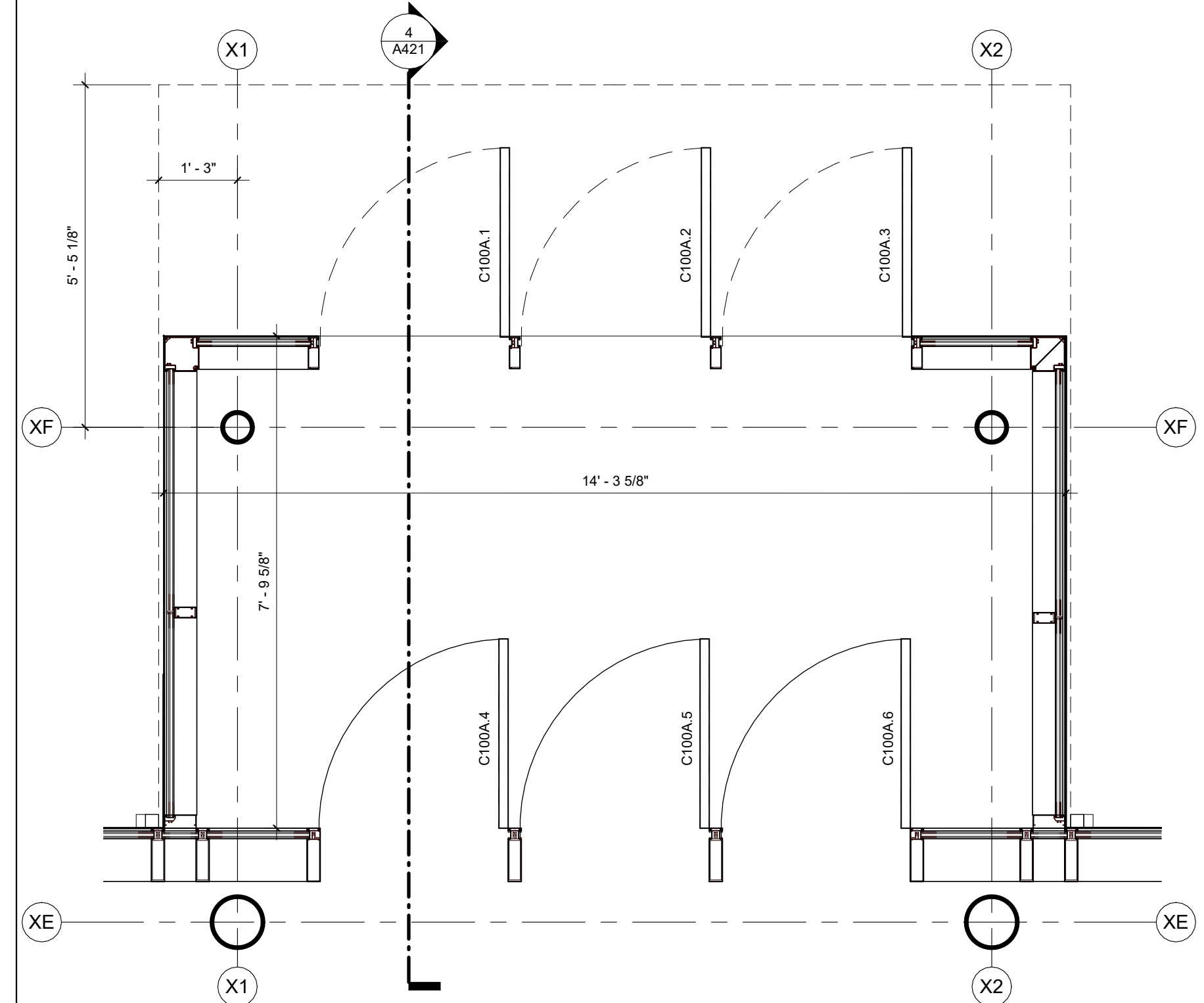


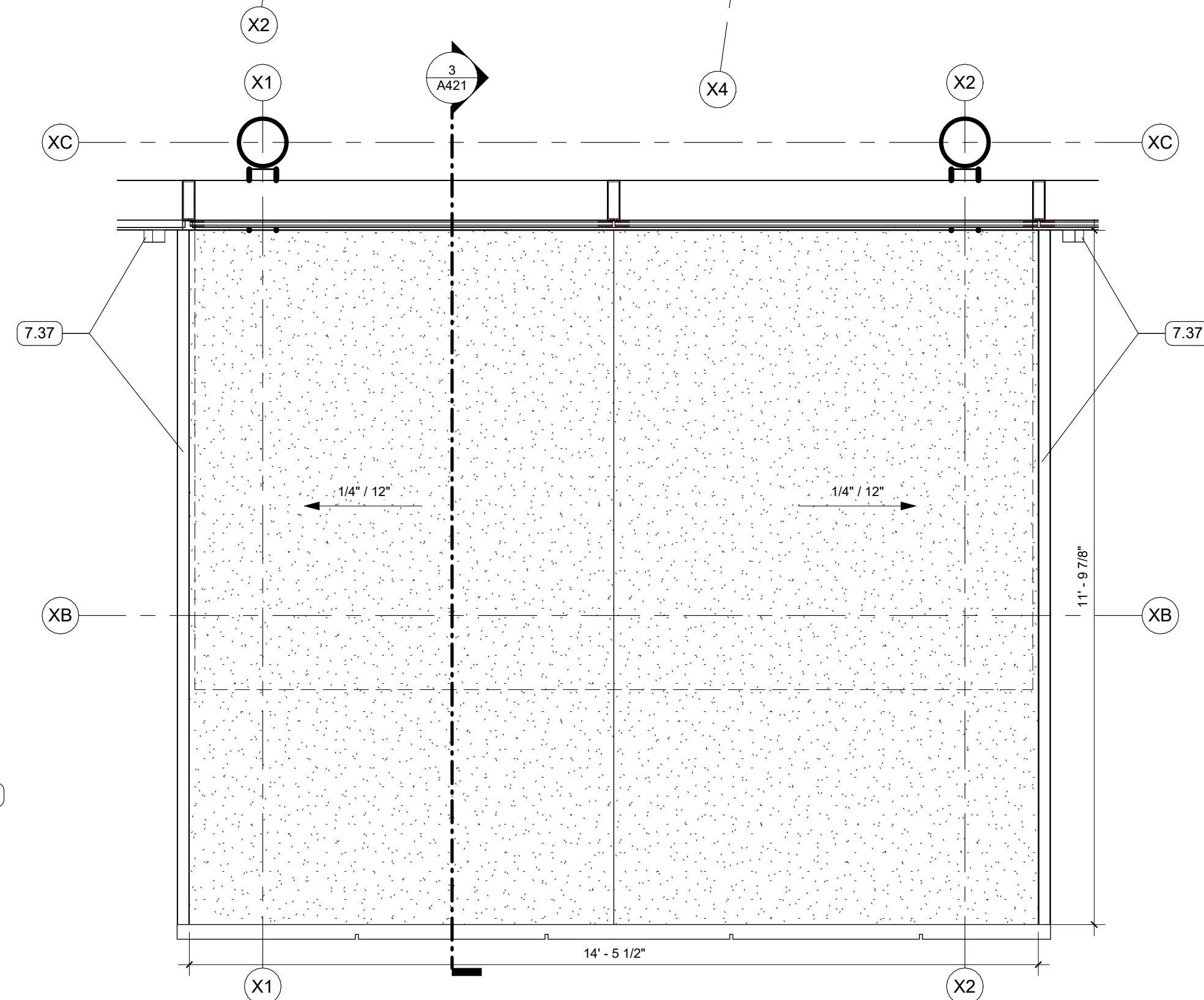
5 ALTERNATE NO. 3 - ENLARGED PLAN - ALUMINUM CANOPY
1/2" = 1'-0" | RE:1/A101



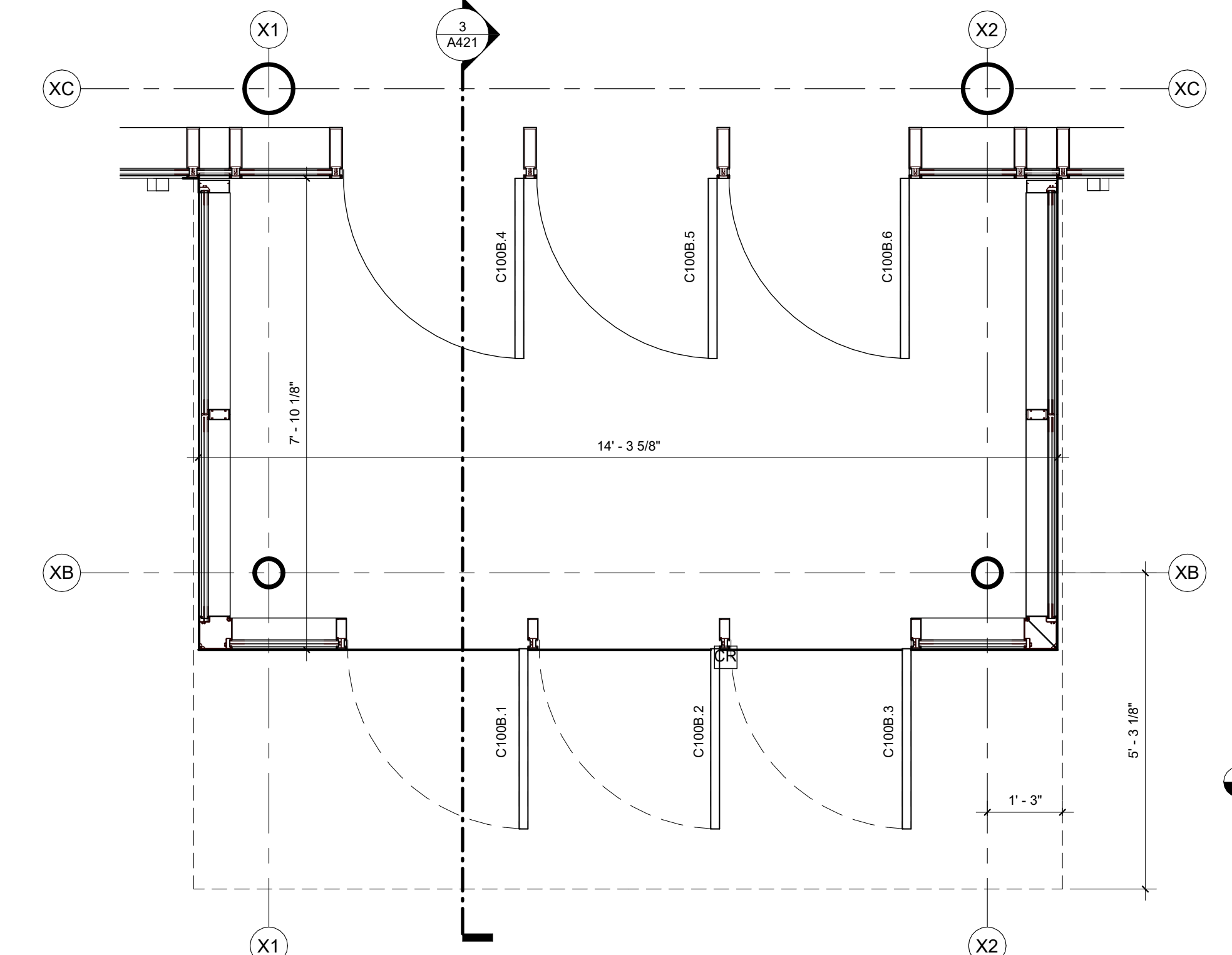
8 VESTIBULE NORTH - ROOF
1/2" = 1'-0"



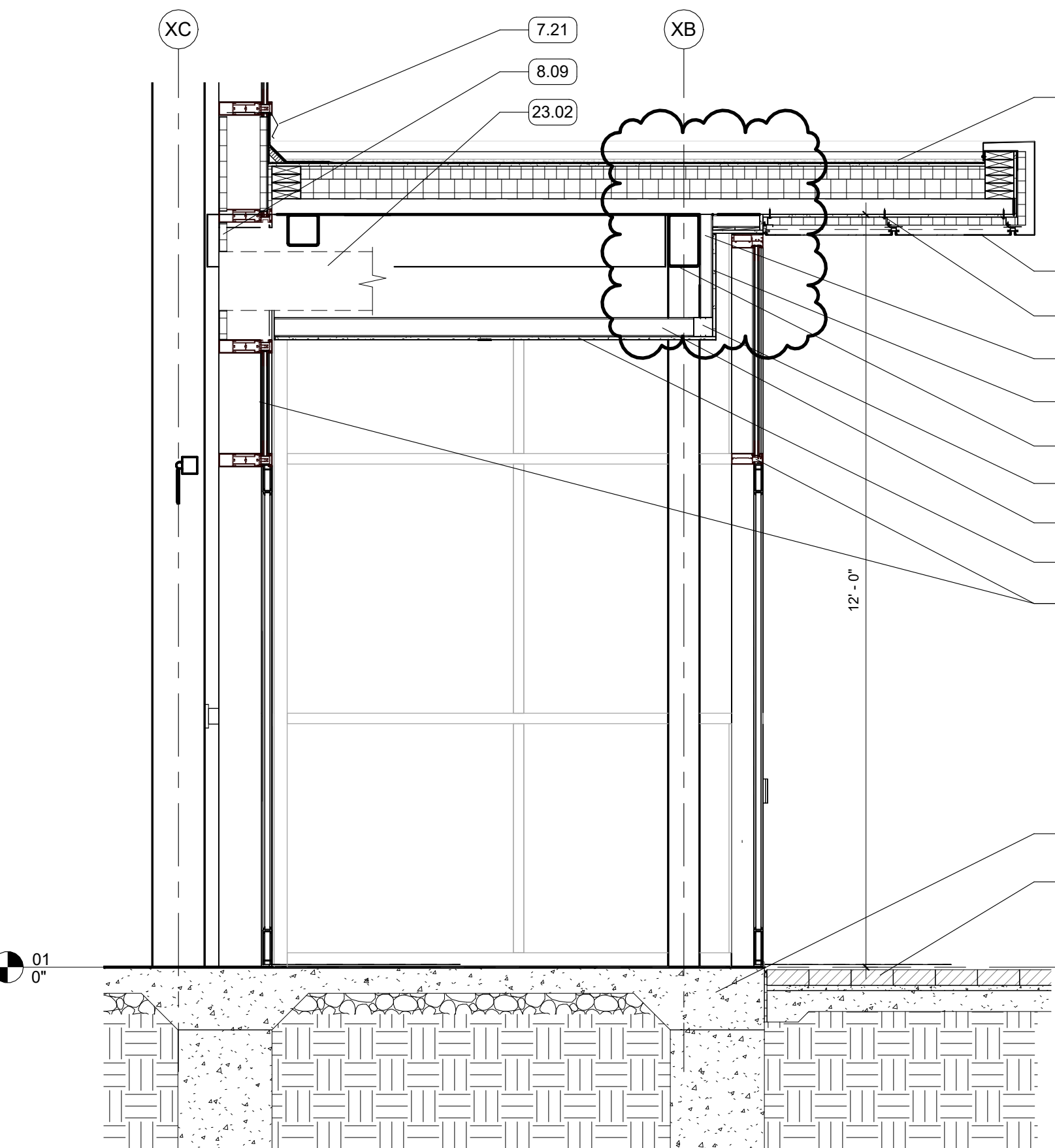
1 VESTIBULE NORTH
1/2" = 1'-0" | RE:1/A101



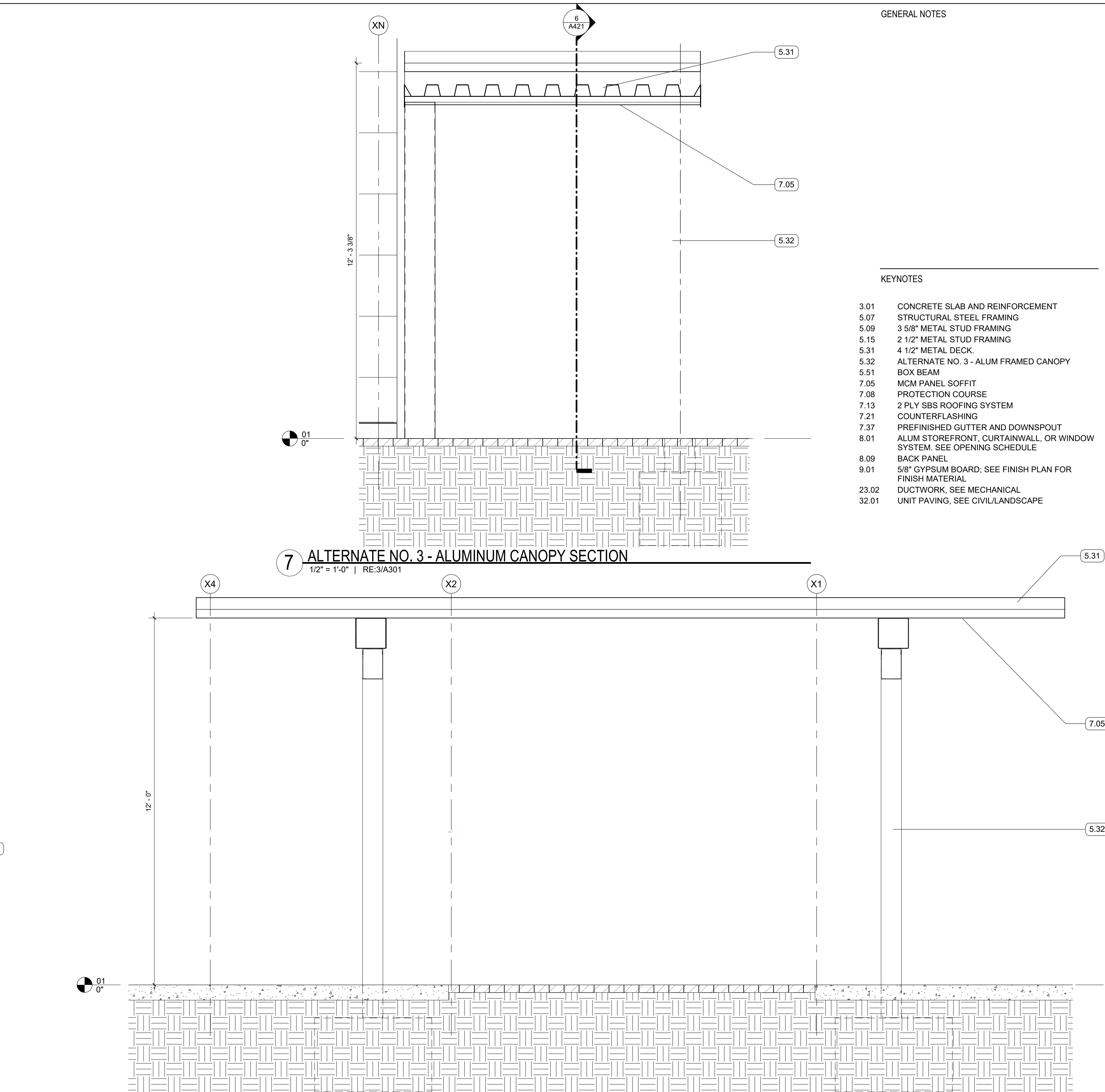
9 VESTIBULE SOUTH - ROOF
1/2" = 1'-0"



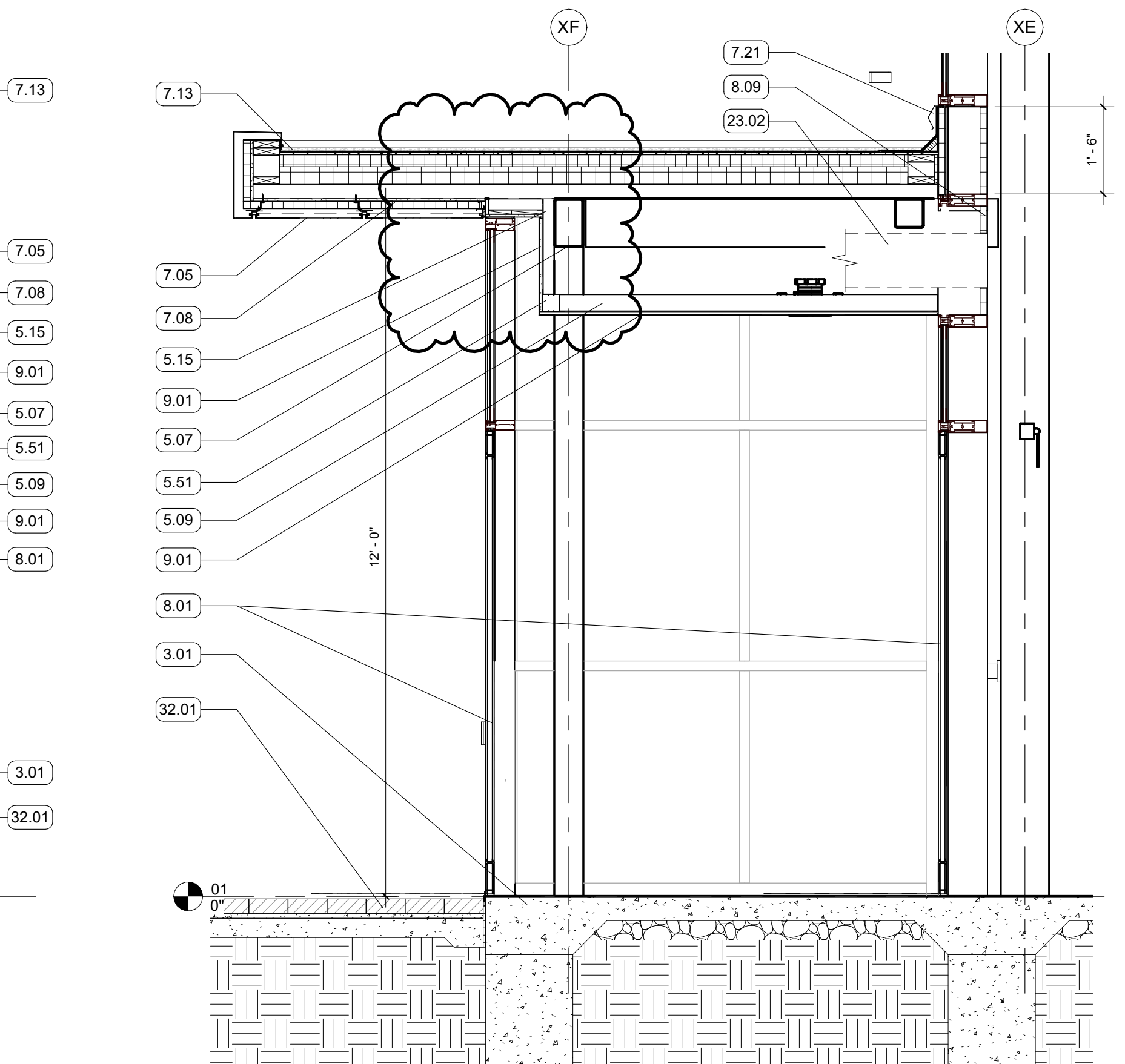
2 VESTIBULE SOUTH
1/2" = 1'-0" | RE:1/A101



3 SECTION - SOUTH VESTIBULE
1/2" = 1'-0" | RE:2/A421



6 ALTERNATE NO. 3 - ALUMINUM CANOPY LONGITUDINAL SECTION
1/2" = 1'-0" | RE:5/A421



4 SECTION - NORTH VESTIBULE
1/2" = 1'-0" | RE:1/A421

GENERAL NOTES

KEYNOTES

- 3.01 CONCRETE SLAB AND REINFORCEMENT
- 5.07 STRUCTURAL STEEL FRAMING
- 5.09 3 5/8" METAL STUD FRAMING
- 5.15 2 1/2" METAL STUD FRAMING
- 5.31 4 1/2" METAL DECK
- 5.32 ALTERNATE NO. 3 - ALUM FRAMED CANOPY
- 5.51 BOX BEAM
- 7.05 MCM PANEL SOFFIT
- 7.08 PROTECTION COURSE
- 7.13 2 PLY SBS ROOFING SYSTEM
- 7.21 COUNTERFLASHING
- 7.37 PREFINISHED GUTTER AND DOWNSPOUT
- 8.01 ALUM STOREFRONT, CURTAINWALL, OR WINDOW SYSTEM, SEE OPENING SCHEDULE
- 8.09 BACK PANEL
- 9.01 5/8" GYPSUM BOARD, SEE FINISH PLAN FOR FINISH MATERIAL
- 23.02 DUCTWORK, SEE MECHANICAL
- 32.01 UNIT PAVING, SEE CIVILLANDSCAPE

ASHE I BROUSSARD I WEINZETTLE ARCHITECTS

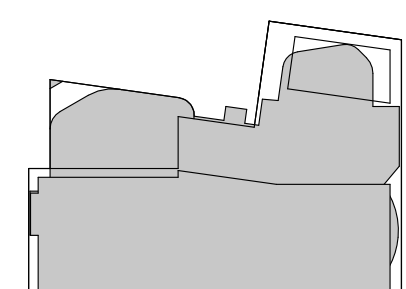
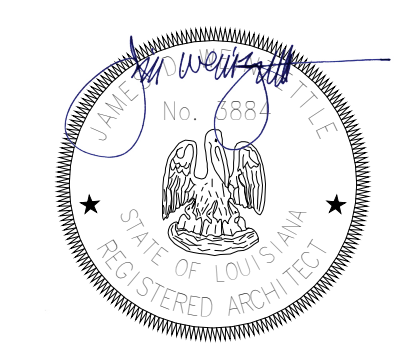
CONSULTANTS
Monroe Butler & Associates, LLC
CABDO Landscape Architecture, LLC
Fox Neale Engineering, LLC
Sala O'Brien
Mechanical Engineering
Associated Design Group, Inc.
Electrical
Specialty Architecture

ISSUE FOR BID
LOUISIANA STATE UNIVERSITY
ALEXANDRIA
DOWNTOWN HEALTH SERVICES CENTER
800 JACKSON ST.
ALEXANDRIA, LA 71301

PROJECT # 19-402-23-01
ARCH PROJECT # 2023.28 / 1531.00-23
SITE ID: NEW SITE CODE: 4-40-433
DATE OCTOBER 10, 2025

Ashe Broussard Weinzettle Architects, LLP
Tipton Associates APAC, A Joint Venture
301 Jackson Street, Suite 205
Alexandria, LA 71301

NO. REVISION DATE
1 Addendum No. 2 12.03.2025



ENLARGED
VESTIBULE PLANS
AND SECTIONS &
CANOPY DETAILS

A421